

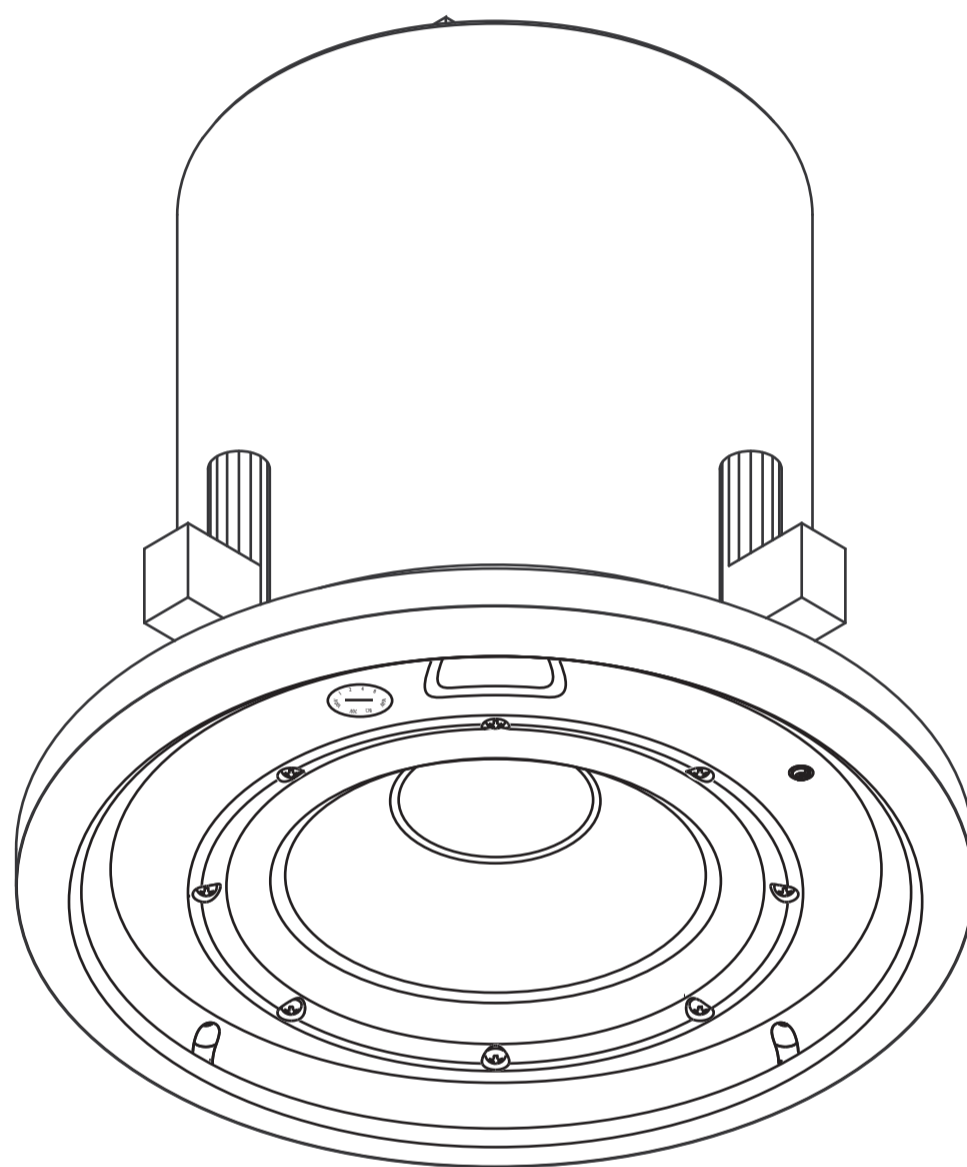
# AcousticCoverage (AC)



## User Manual

---

Model AC-C4T



TD-000432-00-A



## EXPLANATION OF SYMBOLS


The term **“WARNING!”** indicates instructions regarding personal safety. If the instructions are not followed the result may be bodily injury or death.

The term **“CAUTION!”** indicates instructions regarding possible damage to physical equipment. If these instructions are not followed, it may result in damage to the equipment that may not be covered under the warranty.

The term **“IMPORTANT!”** indicates instructions or information that are vital to the successful completion of the procedure.

The term **"NOTE"** is used to indicate additional useful information.

 The intent of the lightning flash with arrowhead symbol in a triangle is to alert the user to the presence of un-insulated "dangerous" voltage within the product's enclosure that may be of sufficient magnitude to constitute a risk of electric shock to humans.

 The intent of the exclamation point within a triangle is to alert the user to the presence of important safety, and operating and maintenance instructions in this manual.



## IMPORTANT SAFETY INSTRUCTIONS



- Keep these instructions.
- Heed all warnings.
- Follow all instructions.
- Do not use this apparatus near water or liquids.
- Do not submerge the apparatus in water or liquids.
- Do not use any aerosol spray, cleaner, disinfectant or fumigant on, near or into the apparatus. Clean only with a dry cloth.
- Inspect the apparatus for signs of external wear and tear or signs of damage. All damage to the apparatus should be immediately repaired by a QSC authorized service station or QSC International Distributor. Failure to perform necessary repairs could lead to additional damage or to safety hazards. Failure to perform necessary repairs voids the limited warranty and QSC is not responsible for any injury, harm or related damages arising from any failure to perform those repairs.
- Do not install near any heat sources such as radiators, heat registers, stoves, or other apparatus (including amplifiers) that produce heat.
- Only use attachments/accessories specified by the manufacturer.
- Refer all servicing to qualified service personnel.
- Adhere to all applicable, local codes.
- Consult a licensed, professional engineer when any doubt or questions arise regarding a physical equipment installation.

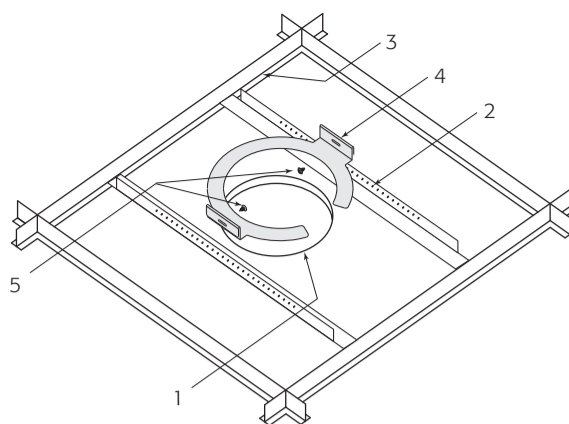
## Maintenance and Repair

Advance technology, e.g., the use of modern materials and powerful electronics, requires specially adapted maintenance and repair methods. To avoid a danger of subsequent damage to the apparatus, injuries to persons and/or the creation of additional safety hazards, all maintenance or repair work on the apparatus should be performed only by a QSC authorized service station or an authorized QSC International Distributor. QSC is not responsible for any injury, harm or related damages arising from any failure of the customer, owner or user of the apparatus to facilitate those repairs.

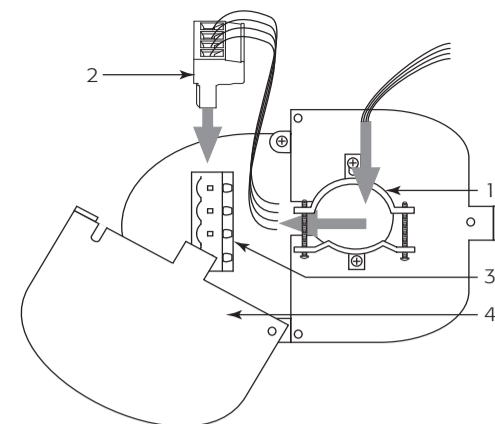
## Prepare Ceiling

Refer to Figure 1.

1. Use the template provided to mark and cut a hole (1) in the ceiling where the loudspeaker is to be installed. For frame-construction ceiling, skip to "Wire the Loudspeakers".
2. Install two V-rails (2), one on each side of the hole, and supported by the suspended-ceiling support rails (3).
3. Install the C-ring (3) over the hole, using the V-rails as support. Make sure the clips on the C-ring are properly fitted over the V-rail.
4. Use sheet-metal screws (5) to secure the C-ring to the V-rails.



– Figure 1 –

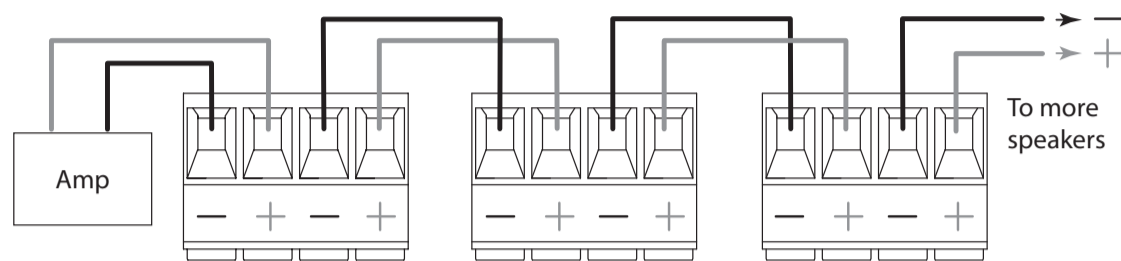


– Figure 2 –

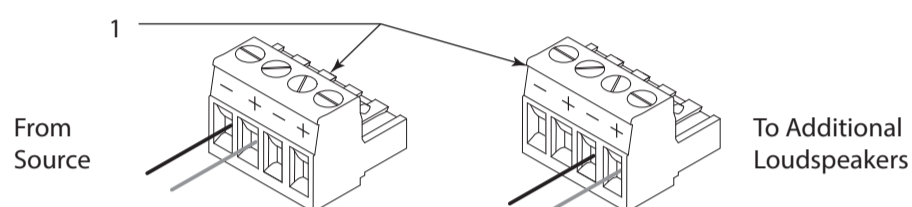
## Wire the Loudspeakers

Refer to Figure 2.

1. Pass the wires down through the conduit/stress-relief clamp. Leave enough wire for making connections. Carefully tighten the clamp over the wires, or over the conduit if it is used.
2. Wire the female Euro-style plug (1) as shown in Figure 3.
3. Slide the cover (3) over the connector and secure with the Phillips screw.



Parallel Wiring Diagram



– Figure 3 –

## Seismic Safety

Refer to Figure 4.

1. Attach an appropriate safety line to the safety tab on the back of the connector cover, and to an appropriate part of the structure.



**WARNING!** Be sure to check and adhere to local building codes for seismic requirements.

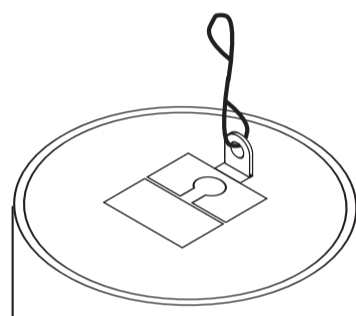
## Mount the Loudspeaker

Refer to Figure 5.

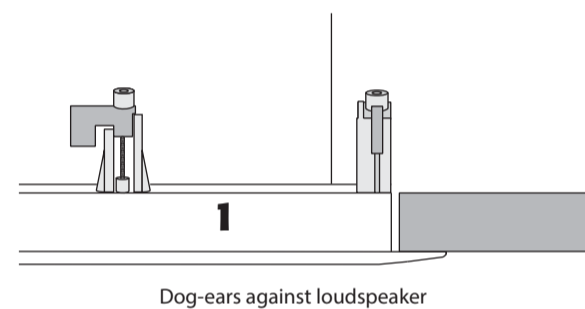
1. Make sure all of the dog-ears are up against the side of the metal loudspeaker housing.
2. Slide the Loudspeaker Housing up through the hole into the ceiling.
3. Use a Phillips screwdriver to tighten each of the four dog-ear screws.



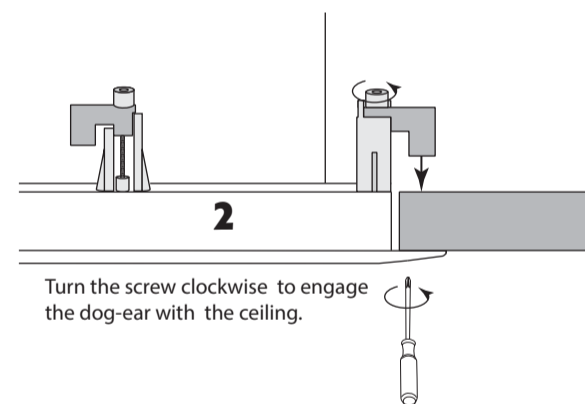
**CAUTION!** Do not overtighten the dog-ear screws!



– Figure 4 –



Dog-ears against loudspeaker



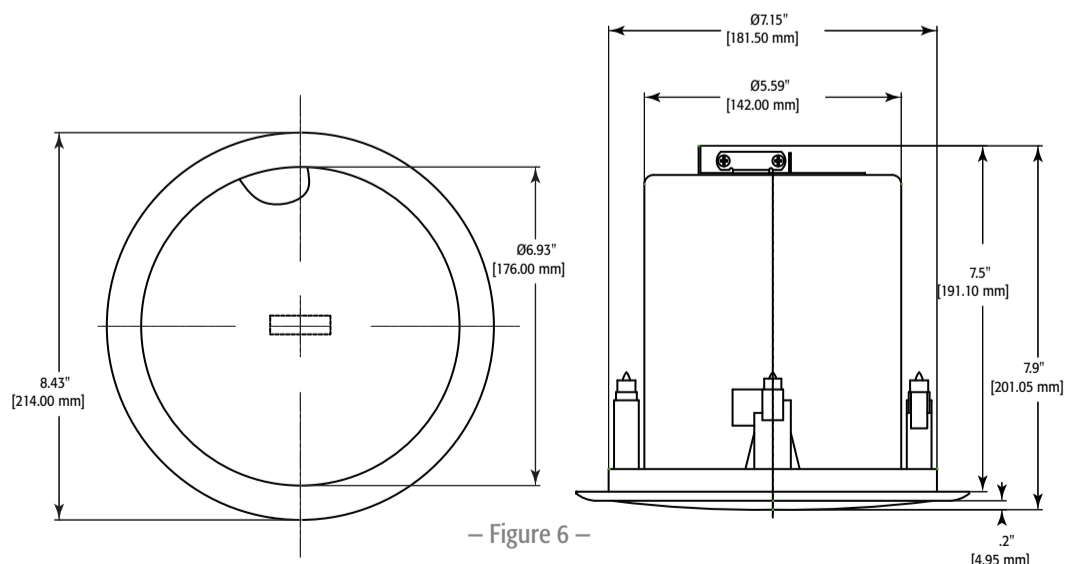
Turn the screw clockwise to engage the dog-ear with the ceiling.

– Figure 5 –

## Specifications

Name	Specification
Transducer	4" Polypropylene cone with rubber surround
Rated noise power [rms] <sup>(1)</sup>	16 W
Nominal Impedance	8 Ω
Transformer Taps	1, 2, 4, 8, 16 W, 8 Ω bypass, 70 and 100 V
Effective frequency range <sup>(2)</sup>	70 Hz – 16 kHz
Rated coverage <sup>(3)</sup>	140° conical
Sensitivity <sup>(4)</sup>	89 dB
Maximum continuous SPL <sup>(5)</sup>	101 dB
Maximum peak SPL <sup>(5)</sup>	107 dB
Net weight	2.22 kg / 4.9 lbs
Shipping weight	6.86 kg / 15.1 lbs
Product dimensions (H x W x D)	Ø214 mm x 201 mm (Ø8.4" x 7.9")
Shipping dimensions (H x W x D)	273.1 mm x 609.6 mm x 266.7 mm (10.75" x 24" x 10.5")

- 1 AES2-1984 noise signal for 2 Hrs, 80hms
- 2 Half-space, -10 dB from on-axis sensitivity
- 3 -6dB from on-axis, 500-5kHz
- 4 Half-space, on -axis, 2.83V, 1 m
- 5 Calculated from rated noise voltage and sensitivity



– Figure 6 –



Mailing Address:

QSC Audio Products, LLC  
1675 MacArthur Boulevard  
Costa Mesa, CA 92626-1468 USA

Telephone Numbers:

Main Number: (714) 754-6175  
Sales & Marketing: (714) 957-7100 or toll free (USA only) (800) 854-4079  
Customer Service: (714) 957-7150 or toll free (USA only) (800) 772-2834

Facsimile Numbers:

Sales & Marketing FAX: (714) 754-6174  
Customer Service FAX: (714) 754-6173

World Wide Web:

[www.qsc.com](http://www.qsc.com)

E-mail:

[info@qsc.com](mailto:info@qsc.com)  
[service@qsc.com](mailto:service@qsc.com)  
[tech\\_support@qsc.com](mailto:tech_support@qsc.com)